



ILLINOIS MEDICAL DISTRICT



2225 West Harrison

Chicago, IL 60612



**7,555 RSF Lab Space Available
in the Illinois Medical District**

December 2023



Suite 105 – 7,555 SF

[Click for Virtual Tour](#)

Amenities



Shared Conference Rooms



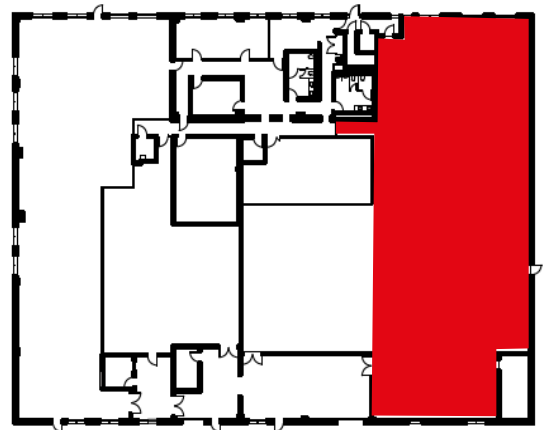
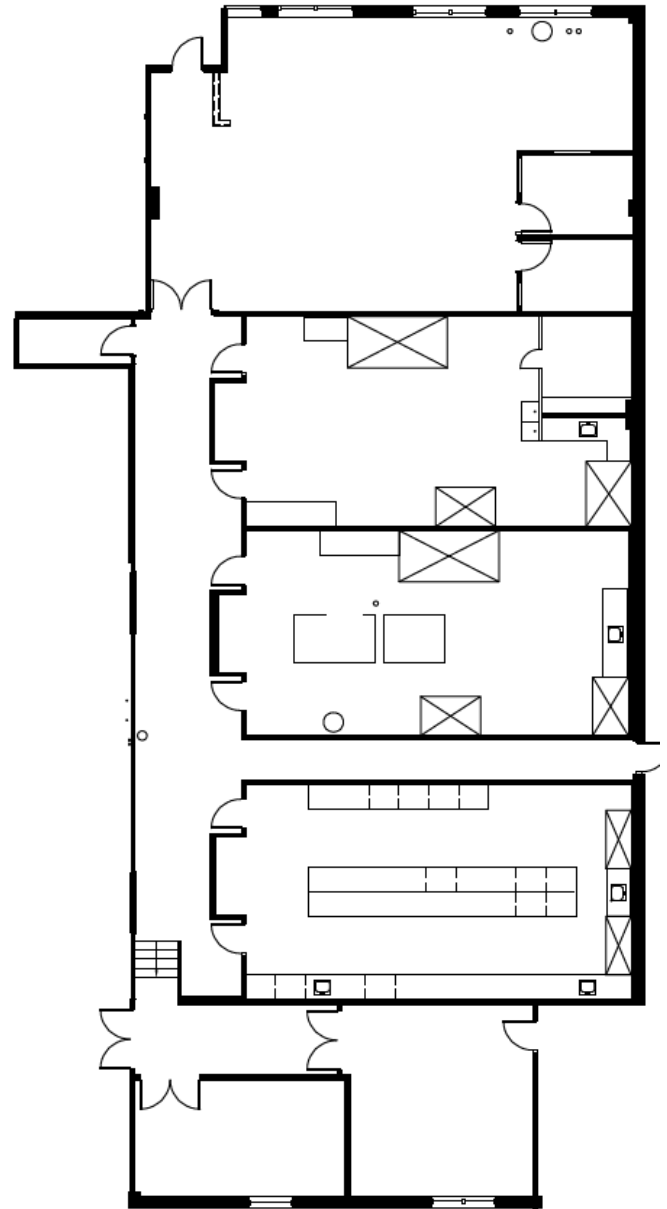
Contiguous Lab Space



Ample Parking



Located in Illinois Medical District





Move-in Ready for Lab Use

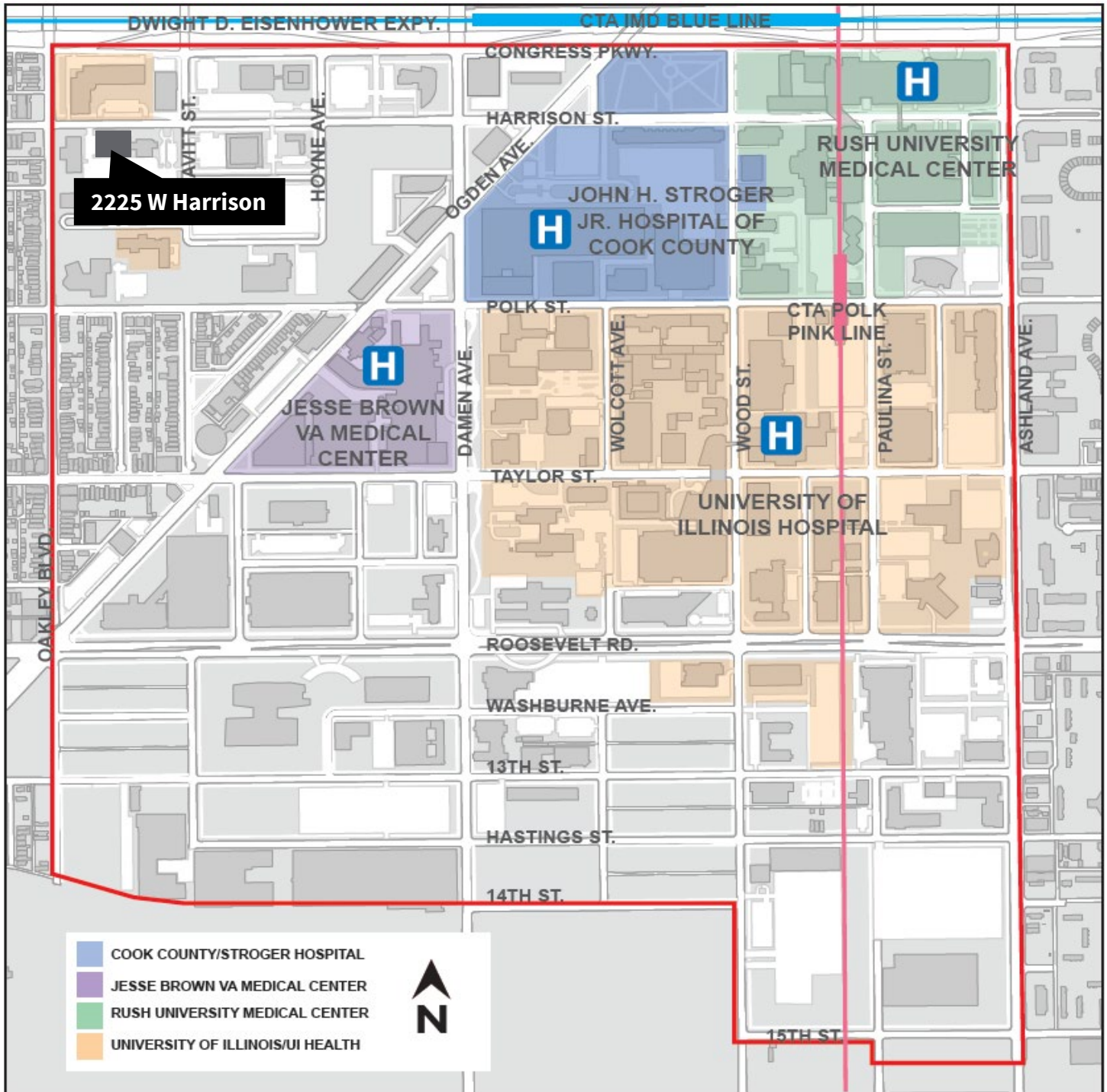
- **Benchtop space suitable for tenant specific benchtop equipment**
- **2 Hamilton Safeaire Benchtop Hoods**
- **4 Hamilton Safeaire Walk in Hoods**
- **2 Labconco Walk in Hoods**
- **1 Double Slop Sink**
- **1 Emergency Shower**
- **1 Eye Wash Station**
- **1 AED**
- **1,127 SF temperature controlled shared loading area**
 - **1 raised loading dock door**
 - **1 grade drive in door**
- **Existing Power Supply = 480V 3 Phase**
- **Sprinkler riser**
- **20 Surface Spaces Available**

Building Overview

SIZE	21,658 SF / 2 Stories
CLASS	B
FLOOR SIZE	20,055 SF
PARKING	1.25 per 1,000 RSF
PROXIMITY TO TRANSIT	Close to Pink and Blue CTA Lines and I-290



Illinois Medical District Area Overview



Sarah Cogswell
 Executive Vice President
 JLL
 +1 312 520 5264
sarah.cogswell@am.jll.com

Sarah Ware
 Founder and CEO
 Ware Realty Group, LLC
 +1 312 376 1448 x101
sarah@warerealtygroup.com

Jones Lang LaSalle Midwest LLC, a licensed real estate broker across the US |
 200 East Randolph Street, Suite 4300, Chicago, IL 60608

Although information has been obtained from sources deemed reliable, JLL does not make any guarantees, warranties or representations, express or implied, as to the completeness or accuracy as to the information contained herein. Any projections, opinions, assumptions or estimates used are for example only. There may be differences between projected and actual results, and those differences may be material. JLL does not accept any liability for any loss or damage suffered by any party resulting from reliance on this information. If the recipient of this information has signed a confidentiality agreement with JLL regarding this matter, this information is subject to the terms of that agreement. ©2022. Jones Lang LaSalle IP, Inc. All rights reserved.