



ILLINOIS MEDICAL DISTRICT



2250 West Campbell Park Drive

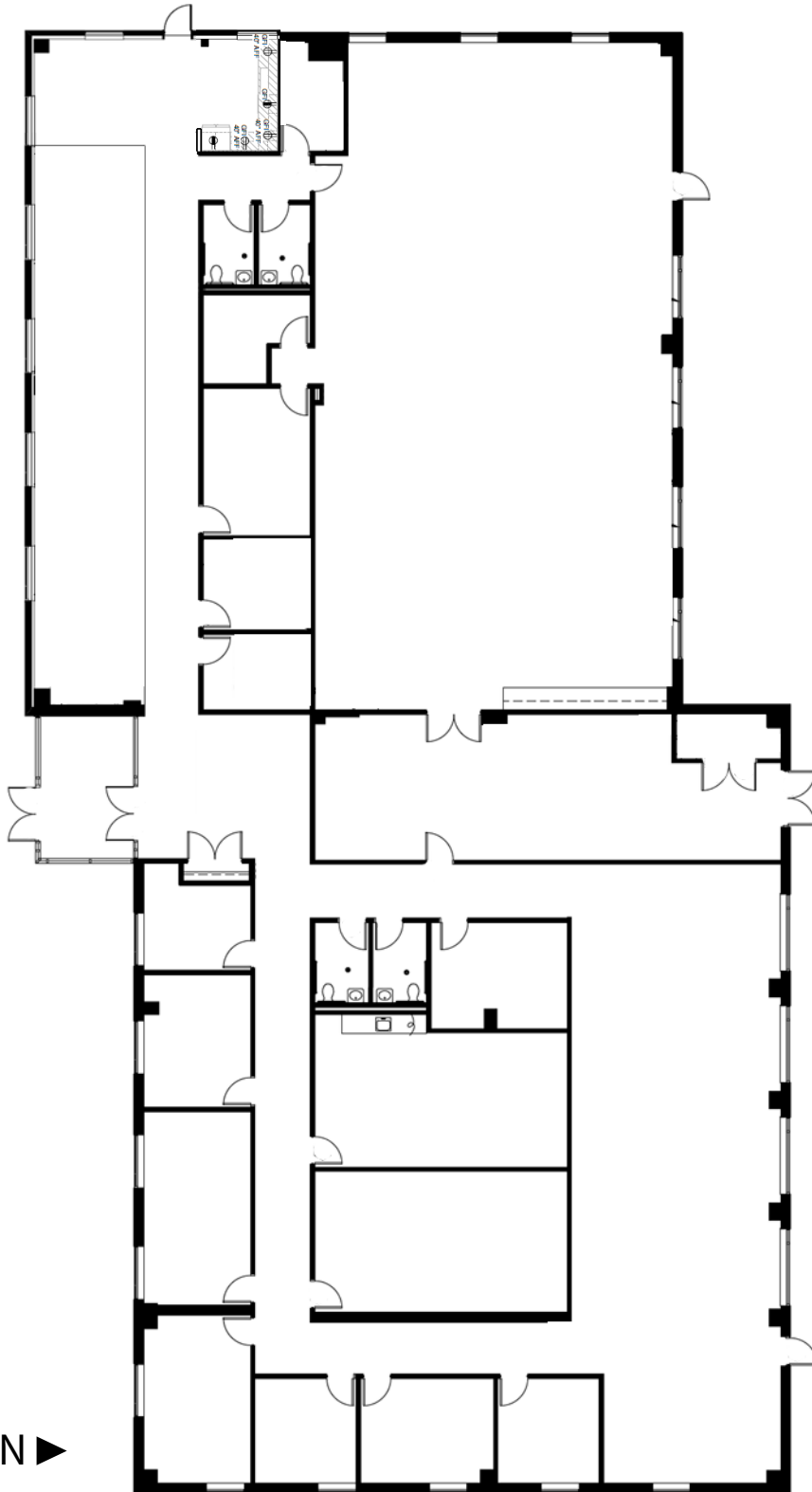
Chicago, IL 60612



11,900 RSF Office/Lab Space
in the Illinois Medical District



Entire Building - 11,900 SF



Space Details:

- 3,000 SF of Lab Space
- 9 Offices
- Conference Room
- Kitchen/Café
- Workshop Area
- Up to 25 parking spaces available





Illinois Medical District Area Overview



Jones Lang LaSalle Midwest LLC, a licensed real estate broker across the US | 200 East Randolph Street, Suite 4300, Chicago, IL 60608

Hugh Murphy
Senior Vice President
JLL
+1 312 228 3618
hugh.murphy@jll.com

Sarah Ware
Founder and CEO
Ware Realty Group, LLC
+1 312 376 1448 x101
sarah@warerealtygroup.com

Although information has been obtained from sources deemed reliable, JLL does not make any guarantees, warranties or representations, express or implied, as to the completeness or accuracy as to the information contained herein. Any projections, opinions, assumptions or estimates used are for example only. There may be differences between projected and actual results, and those differences may be material. JLL does not accept any liability for any loss or damage suffered by any party resulting from reliance on this information. If the recipient of this information has signed a confidentiality agreement with JLL regarding this matter, this information is subject to the terms of that agreement. ©2025. Jones Lang LaSalle IP, Inc. All rights reserved.